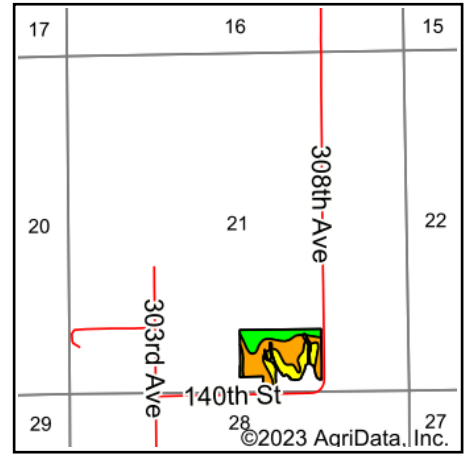
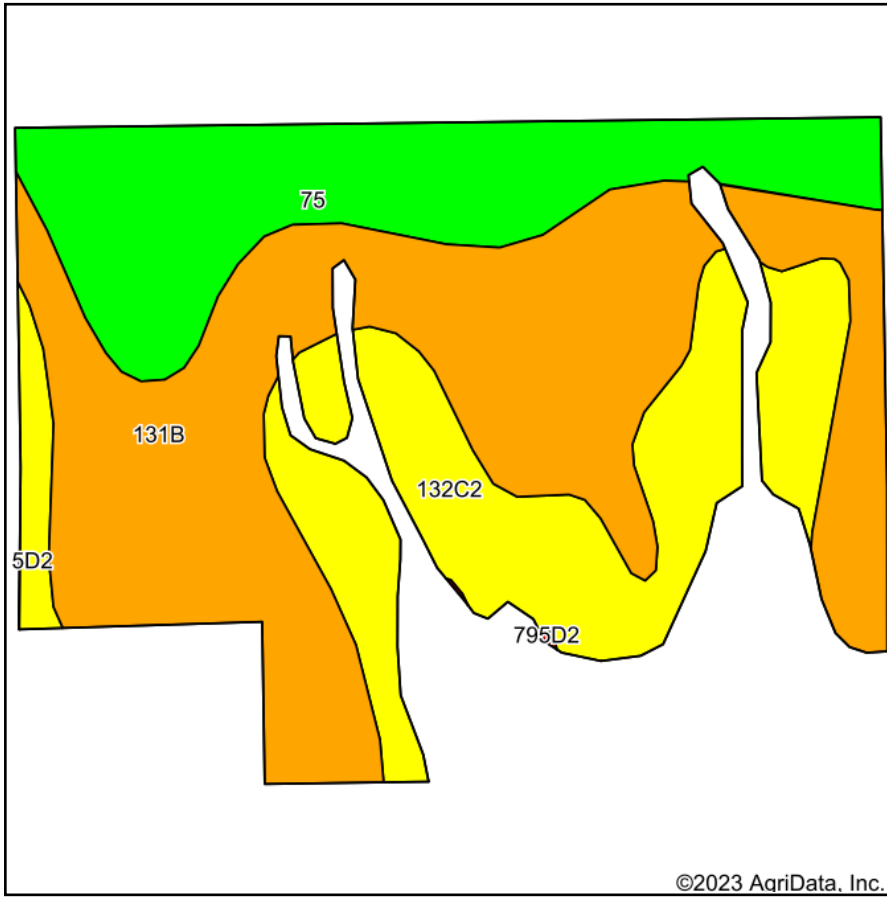


Soils Map



State: **Iowa**
 County: **Lee**
 Location: **21-69N-4W**
 Township: **Denmark**
 Acres: **21.35**
 Date: **10/26/2023**



Maps Provided By:

 CUSTOMIZED ONLINE MAPPING
 © AgriData, Inc. 2023 www.AgriDataInc.com



Area Symbol: IA111, Soil Area Version: 32

Code	Soil Description	Acres	Percent of field	CSR2 Legend	Non-Irr Class *c	CSR2**	CSR
131B	Pershing silt loam, 2 to 5 percent slopes	10.35	48.5%		IIIe	70	67
132C2	Weller silt loam, 5 to 9 percent slopes, moderately eroded	5.90	27.6%		IIIe	59	40
75	Givin silt loam, 1 to 3 percent slopes	5.10	23.9%		Iw	81	82
Weighted Average					2.52	69.6	63.1

**IA has updated the CSR values for each county to CSR2.

*c: Using Capabilities Class Dominant Condition Aggregation Method

Soils data provided by USDA and NRCS.